

PINKAU "200" CODES

By George Webber

(Nov. 2007) Copyright reserved

Emil Pinkau & Co. AG, Leipzig, Saxony, was probably the biggest PPC printer and at the very least these codes can be used to identify Pinkau printing styles for the year 1907.

There has been a lot of research on this printer in previous TPA's (TPA #16 and others). It is puzzling that E. Pinkau & Co. should start numbering their cards for such a short time in 1907. They started numbering again with the secret Capital Letter coding in 1910.

There has been some new developments

1. Helmfried has found the first "200" for Great Britain
2. Erick Middleton (USA) reports that for one card the same number applies to a colour version and also a black & white version
3. Helmfried has found the use of Capital Letters as well as the numerical "20x" coding for USA cards
4. Thank you to Bram Leeftang (Netherlands) for his input

I would particularly appreciate any further data on the "203" cards above. Dates of postal use are especially sought on these "203"s.

Finally I leave you with a puzzle. Maggie Toms (Canada) has found a card that both of us are sure is printed by Pinkau. The unusual thing is that it is coded with a 3 figure number only, in this case "714". Further 3 figure examples are sought, especially dated ones. (contact address on page 54)

Note by the Editor:

The title illustration shows the Pinkau factory at Wittenberger Str. (erected 1897) and comes from the first shares issued in 1903 when the business was converted into a joint-stock company (AG). Practical matters like business/production re-organized, moves, extension etc were often the reason for new/changed card codes. The Pinkau factory was extended in 1906 as well as in 1910 (!).

"201 / 202 / 203" Codes for CANADA (cards H/T Colour & Mono)

CANADA "201" Cards

Number	Place	P/U Date(s)	U/B or D/B	Notes
201241	Montreal	10. Sept 1907		
201244	Can. Pac. Railway	Dec 1908		
201253	Toronto	Oct 1909		
201254	Niagara Falls			H/T Colour
201255	Niagara Falls	May 1909		
201269	Toronto	March 1907	U/B	Earliest P/U
201271	Toronto (Restaurant)	Feb 08, Sept 09 and Sept. 1910		
201273	Toronto	Nov 1911		
291281	Toronto	Sept 1907	U/B	
201283	Toronto	20 Nov 1907	D/B	H/T Colour
201285	Toronto	17 Mar 1909		
201288	Toronto (School)	Jan 09, Aug 1910		
201290	Toronto (Church)	Oct. 1909		
201317	Toronto			
201331	Winnipeg (C.P.Rlwy.)	24 June 1907	D/B	
201342	Alberta	No date		
201344	W. Canada	No date		
201345	Alberta	No date		
201351	Canada	1912		
201352	Canada	Late p/u, 1926		
201356	Canada	Late p/u, 1916		
201357	Can.Pac.Railway			
201359	Alberta	No date		
201361	Can.Pac.Railway	Feb 1908		
201372	Can.Pac.Railway	May 1910		
201375	Can.Pac.Railway	No date		
201593	Toronto	July 1910		
201632	St. Anne de Beaupre			H/T Colour
201633	St. Anne de Beaupre			H/T Colour
201651	Quebec			H/T Colour
201653	Quebec	27 Aug 1907	D/B	
201783	Winnipeg	19 Nov 1907		
201784	Winnipeg	Sept 1907		
201785	Upper Lakes			
201786	Winnipeg			
201788	Winnipeg	Nov 1907		
201790	Winnipeg	Nov & Oct 1907		
201819	Toronto	July 1908		
201833	Ontario	Aug 1908		

CANADA "202" Cards

202277	Montreal			
202278	Montreal	1909		
202561	Montreal	No date		
202563	Montreal	Sept 1909		
202565	Montreal	1912		Late P/U

CANADA "203" Cards

203011	Quebec			
203012	Quebec	1912	D/B	Late P/U
203013	Quebec	June 1910		
203014	Quebec			
203015	Quebec	July 1908		B&W version
203019	Quebec	1910	D/B	2 versions B&W + Colour
203022	Quebec			
203025	Quebec			

"E" Codes USA (some are "201", others are not). H/T colour

201 Type No.	Other Numbers E's, N's etc	P/U Date	Place
201138	E1201	1909	Williamsburg Bridge, New York
201184	E1218	1909	New York
201177	E1228	1909	Broadway, New York
201134	E1201	1908	City Hall, New York
No "200" code	E6602	1907	Portland, Maine
No "200" code	E7462	1910	Binghampton, NY

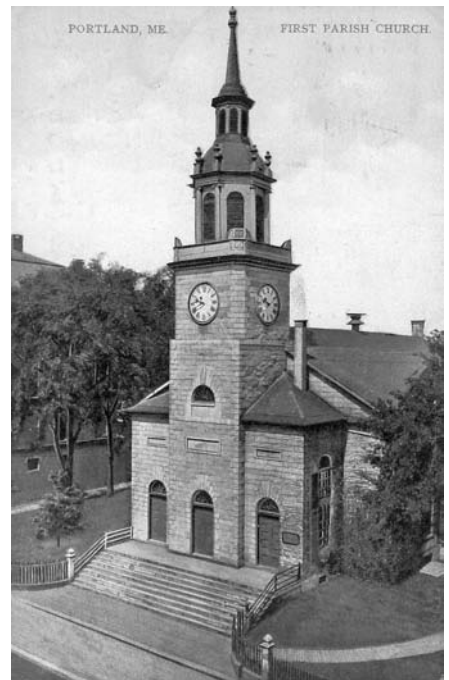
"E" Codes for USA (omits E Codes above). All known cards H/T Colour

Note: D/B permitted March 1st 1907 in USA (but Dec 18th 1903 in Canada)

Code Number	Place	P/U Date	U/B or D/B	Notes
201168	New York		U/B	Pre 1908
201175	New York	25 May 1908	U/B	2 versions
201175 repeat	New York		D/B	2 versions
201518	Detroit	Sept 1908	D/B	
201602	Detroit		D/B	
201713	St. Louis	3/12/09	D/B	

Great Britain "200" Codes

Code Number	Place	P/U Date	U/B or D/B	Notes
200559	Liverpool		D/B	
200798	Cardiff, UK		D/B	



Portland, ME. First Parish Church. P/u in 1907 and was surely printed (co. halftone) by E. Pinkau & Co. The "E 6602" code on address side almost cut off.

Triple !!

By chance I managed to collect 3 cards showing the same picture. Nothing special you would say? Each card comes from a different print run/printer. Two cards were printed by Dr. Trenkler & Co., Leipzig in the (mid) 1920's, and the third by E. Pinkau & Co. This find fits nicely with the article on Trenkler & co. in this issue (page 19) and the role E. Pinkau & Co. played after Trenkler business broke down.

The monochrome collotype printed card itself is not very exciting. A sketch of the workshop found in the Hans-Sachs-House. All three cards bear an identical rubberstamp imprint of the (private run?) museum and the name "E. Daut" (proprietor?).

Hans Sachs (Nov. 5, 1494 – Jan. 19, 1576) was not only a shoemaker but a popular poet and singer from Nürnberg (Nuremberg). An early sympathizer of Martin Luther. His memorial together with the other (more popular I think) son of Nürnberg **Albrecht Dürer** is seen on the card (p/u 1900) below. Publ. by the German Butcher Paper, Berlin, who had held their annual butcher meeting at Nürnberg.



The original shoemaker workshop, "Hans-Sachs-Haus", Nürnberg, with inserted picture of Hans Sachs, signed Carl...? From top: 1) Trenkler & Co. printed with code "i 2282"; 2) with Trenkler "s 510.0" code; 3) now with Pinkau D&D code and publ. imprint "Andro-Verlag Nürnberg 28".

